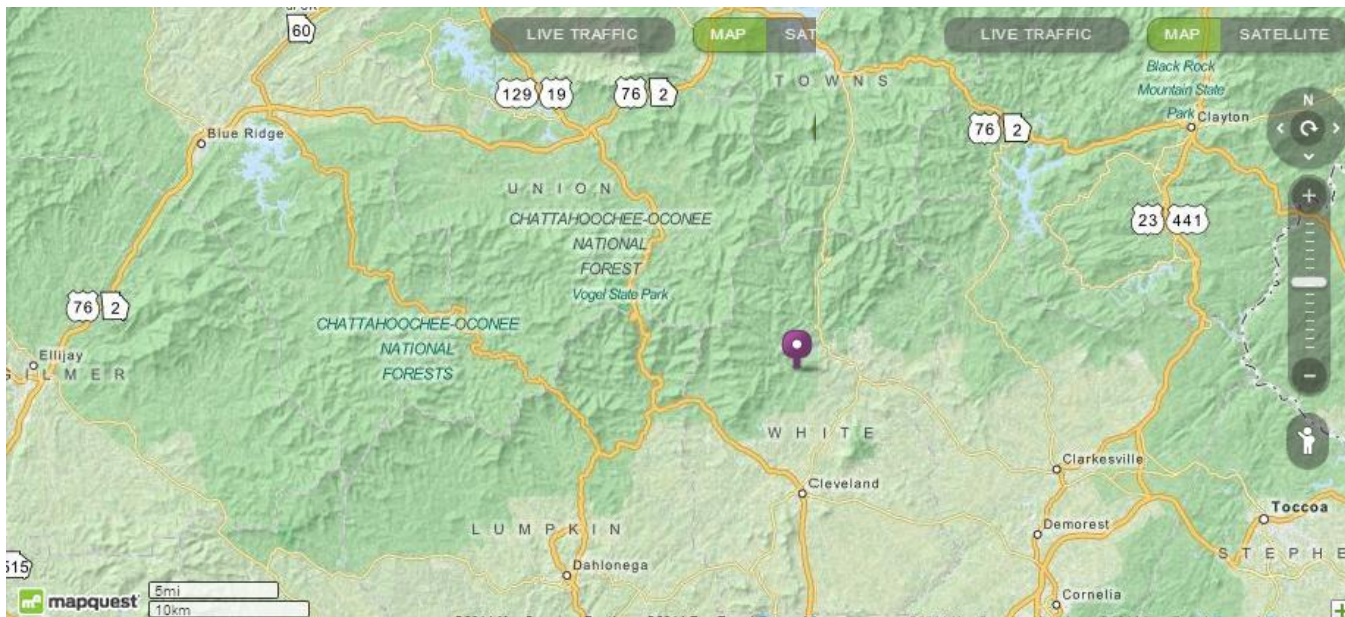


Smithgall Woods Visitor Center, 61 Tsalaki Trail, Helen, GA 30545.

Phone 706-878-4736

Parking fee \$5 per car, free for volunteers.



Directions From Cleveland:

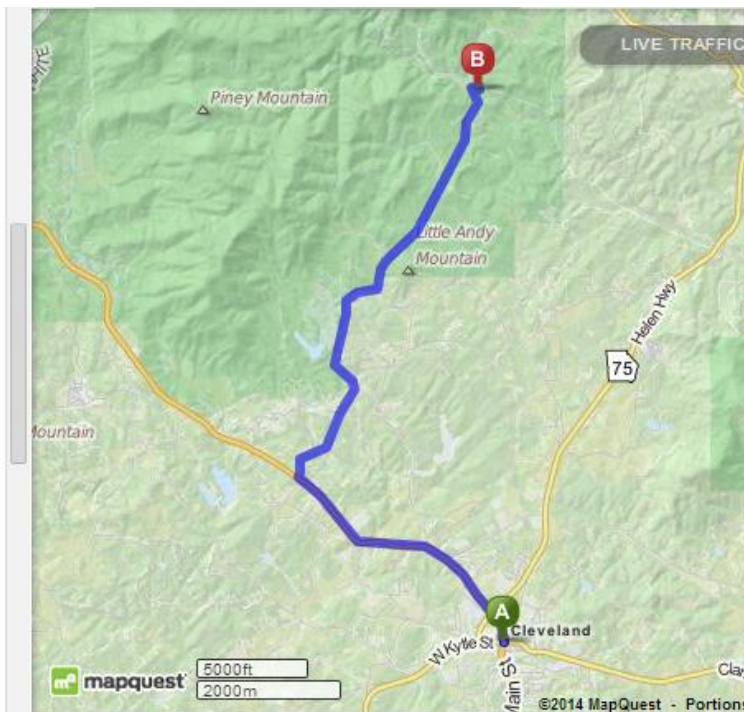
- 1. Start out going west on E Kytle St/GA-115. 0.01 mi

- NORTH
129 2. Take the 1st right onto N Main St/US-129 N/GA-11. Continue to follow US-129 N/GA-11. 3.4 mi
*Allstate Insurance is on the corner
If you are on W Kytle St and reach Courthouse Sq
you've gone a little too far*

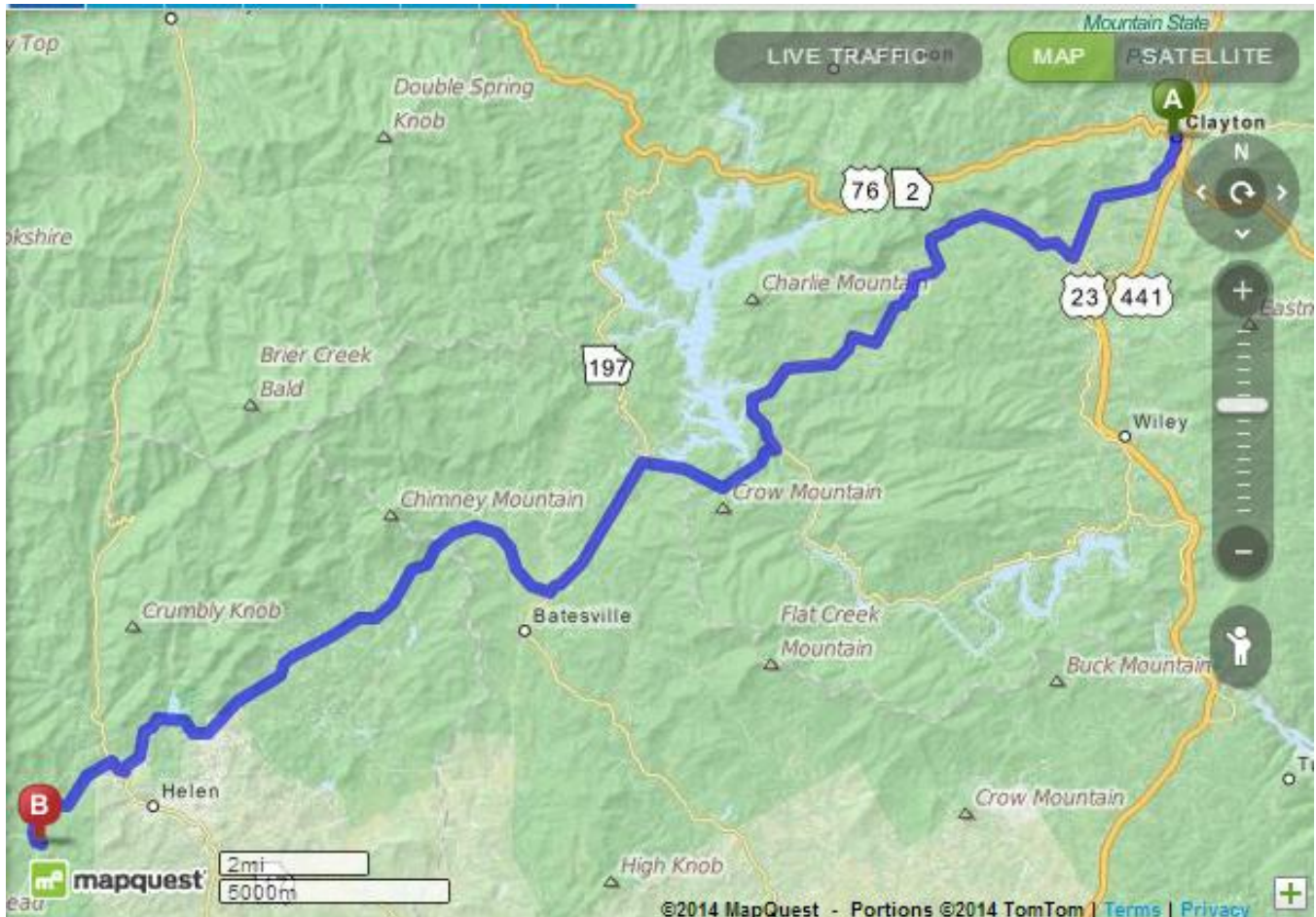
- ALT
75 3. Turn right onto GA-75 Alt/Highway 75 5.7 mi
Alternate.
*GA-75 Alt is just past Twin Lakes Rd
If you reach Tesnatee Gap Valley Rd you've gone
about 0.4 miles too far*

- ➔ 4. Turn right onto Tsalaki Trl. 0.1 mi
*Tsalaki Trl is 0.5 miles past McConnell Dr
If you reach GA-348 you've gone about 0.1 miles
too far*

- 5. 61 Tsalaki Trl is on the left. 0.2 mi
*If you reach Harvest Hill Dr you've gone about 0.2
miles too far*



Directions From Clayton:



1. Start out going south on S Main St toward Roane Aly. 0.9 mi

2. Turn slight left onto Old 441 S. 2.4 mi

3. Turn right onto Bridge Creek Rd. 9.7 mi
*Bridge Creek Rd is just past Thomas St
United States Postal Service is on the corner
If you are on Blair St and reach Taylor St you've gone a little too far*

4. Turn right onto Burton Dam Rd. 2.9 mi

- 197 5. Turn left onto Highway 197 N/GA-197. 3.1 mi

- 356 6. Turn right onto Highway 356/GA-356. 10.8 mi
*Highway 356 is 0.1 miles past Goshen Creek Rd
If you reach Meadowview Rdg you've gone about 0.1 miles too far*

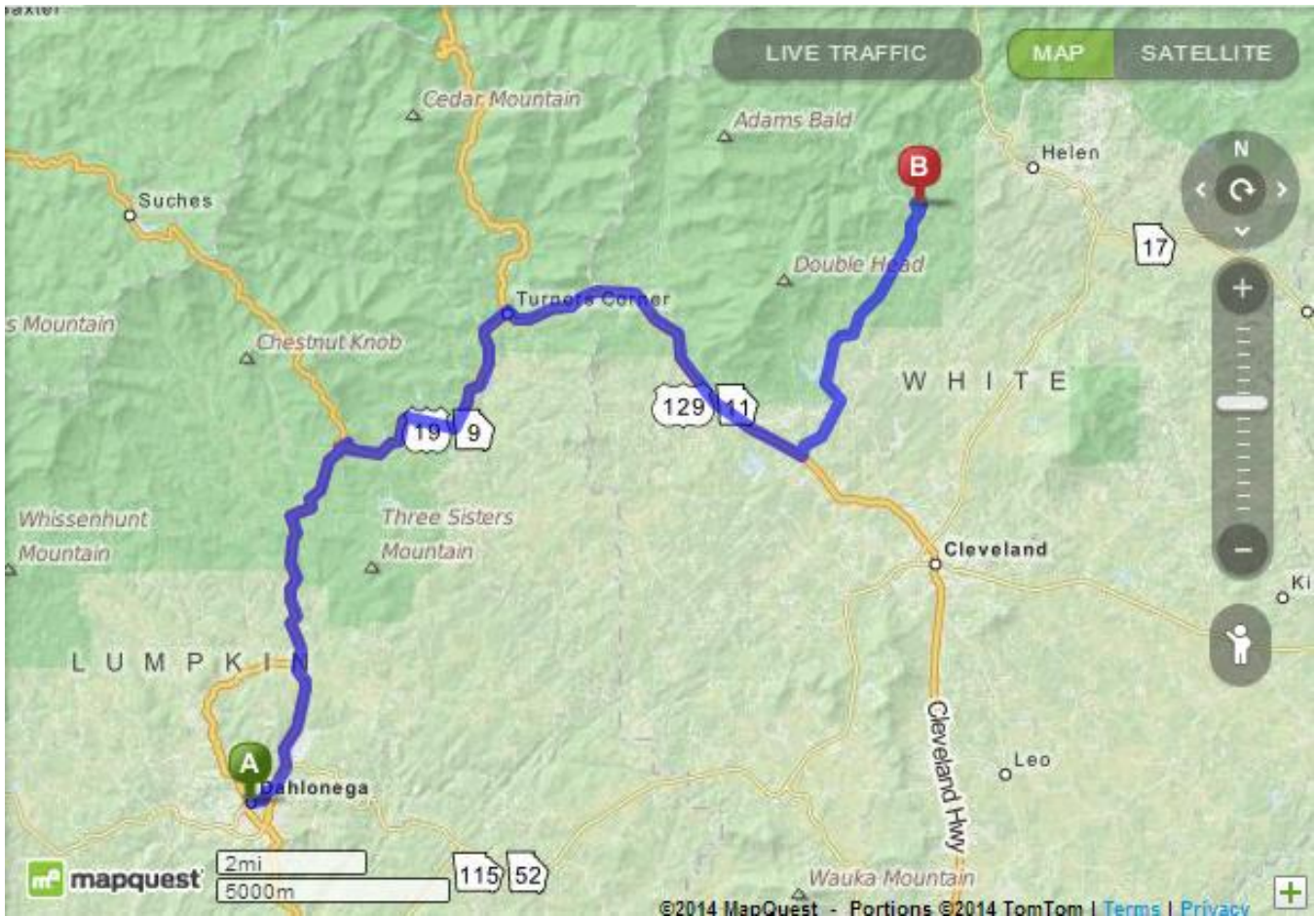
7. Turn right onto Highway 75 N/GA-17/GA-75. 0.3 mi
Shooters On The River is on the corner

8. Take the 1st left onto Highway 75 Alternate/GA-75 Alt. 2.4 mi
*Highway 75 Alternate is 0.1 miles past Elrod Rd
If you reach Clayton Rd you've gone about 0.2 miles too far*

9. Turn left onto Tsalaki Trl. 0.1 mi
*Tsalaki Trl is 0.1 miles past GA-348
If you reach McConnell Dr you've gone about 0.5 miles too far*

10. 61 TSALAKI TRL is on the left. 0.2 mi
If you reach Harvest Hill Dr you've gone about 0.2 miles too far

Directions From Dahlonega: 25.38 miles, 35 minutes



1. Start out going east on E Main St/GA-52 Bus 0.5 mi toward Boyd Cir.



2. Turn left onto Morrison Moore Pkwy E/US-19 N/GA-60/GA-52/GA-9. Continue to follow US-19 N/GA-60/GA-9. 4.0 mi
*US-19 N is 0.1 miles past Turner Rd
 JERRYS SUPERETTE is on the corner
 If you are on Walmart Way and reach Consolidated Gold Mine Rd you've gone a little too far*



3. Turn slight right onto Highway 19 N/US-19 N/GA-60/GA-9. Continue to follow Highway 19 N/US-19 N/GA-9. 8.5 mi
*Highway 19 N is 0.1 miles past Wards Creek Dr
 If you reach the end of Regent Dr you've gone about 0.2 miles too far*

4. Turn right onto Turners Corner Rd/US-129 S/GA-11. Continue to follow US-129 S/GA-11. 7.0 mi



5. Turn left onto GA-75 Alt/Highway 75 Alternate. 5.7 mi
*GA-75 Alt is 0.4 miles past Tesnatee Gap Valley Rd
 If you reach Twin Lakes Rd you've gone a little too far*



6. Turn right onto Tsalaki Trl. 0.1 mi
*Tsalaki Trl is 0.5 miles past McConnell Dr
 If you reach GA-348 you've gone about 0.1 miles too far*



7. 61 TSALAKI TRL is on the left. ■
If you reach Harvest Hill Dr you've gone about 0.2 miles too far