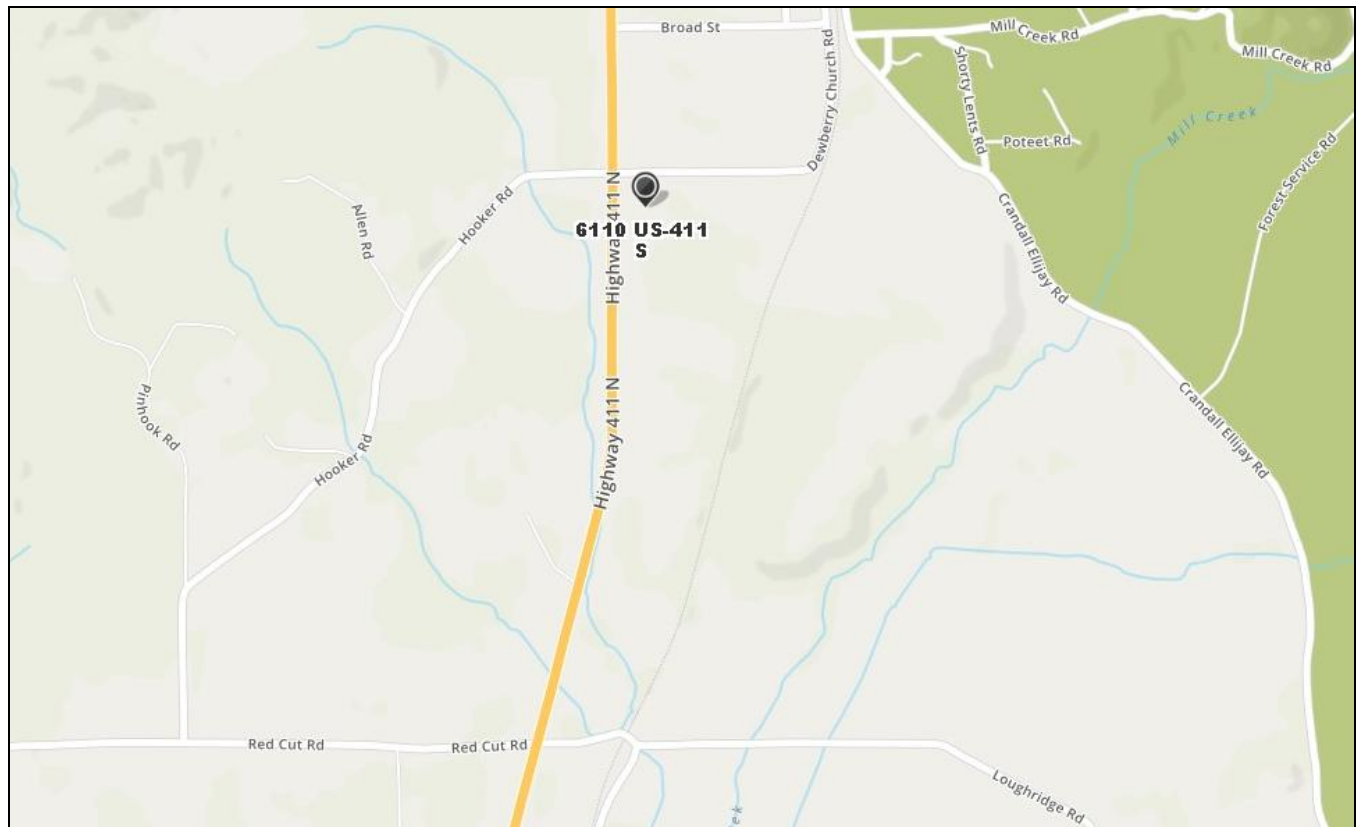
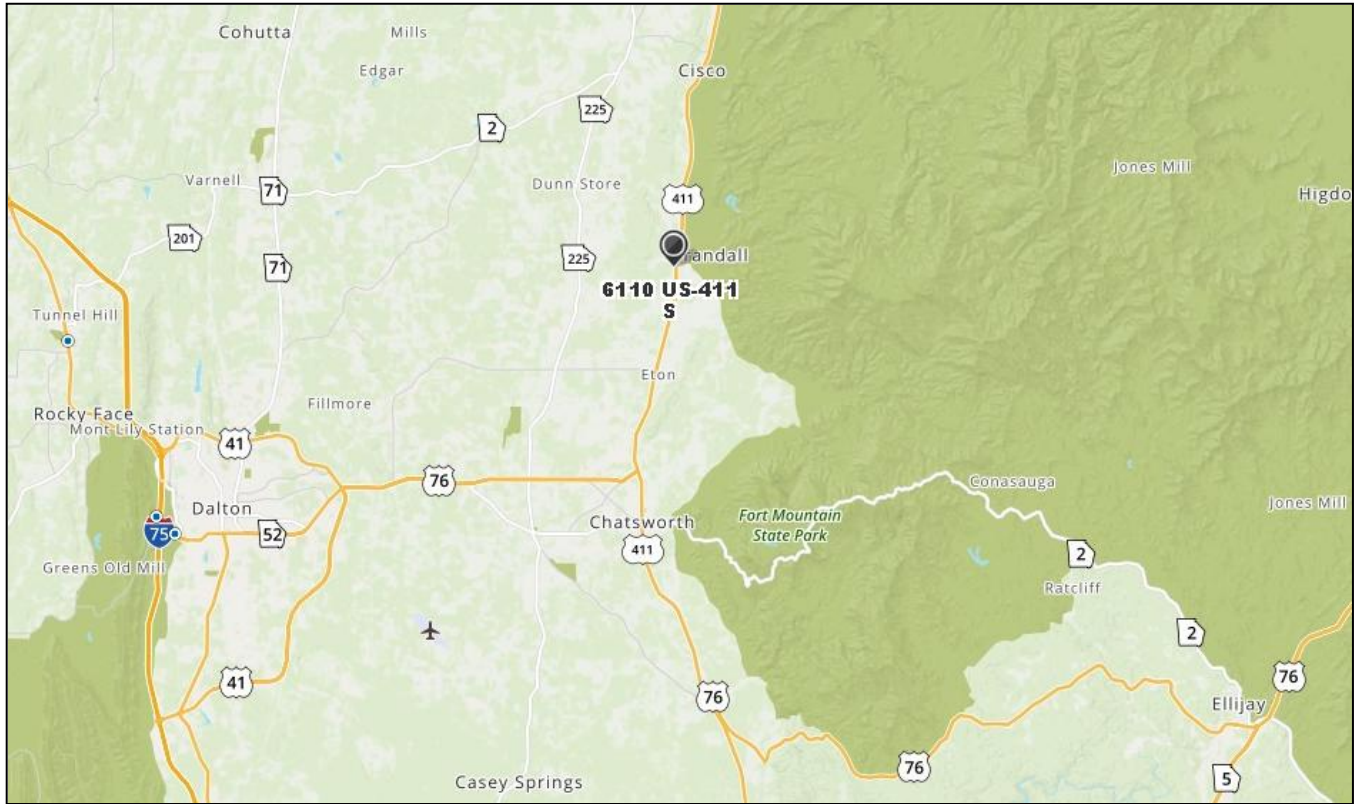
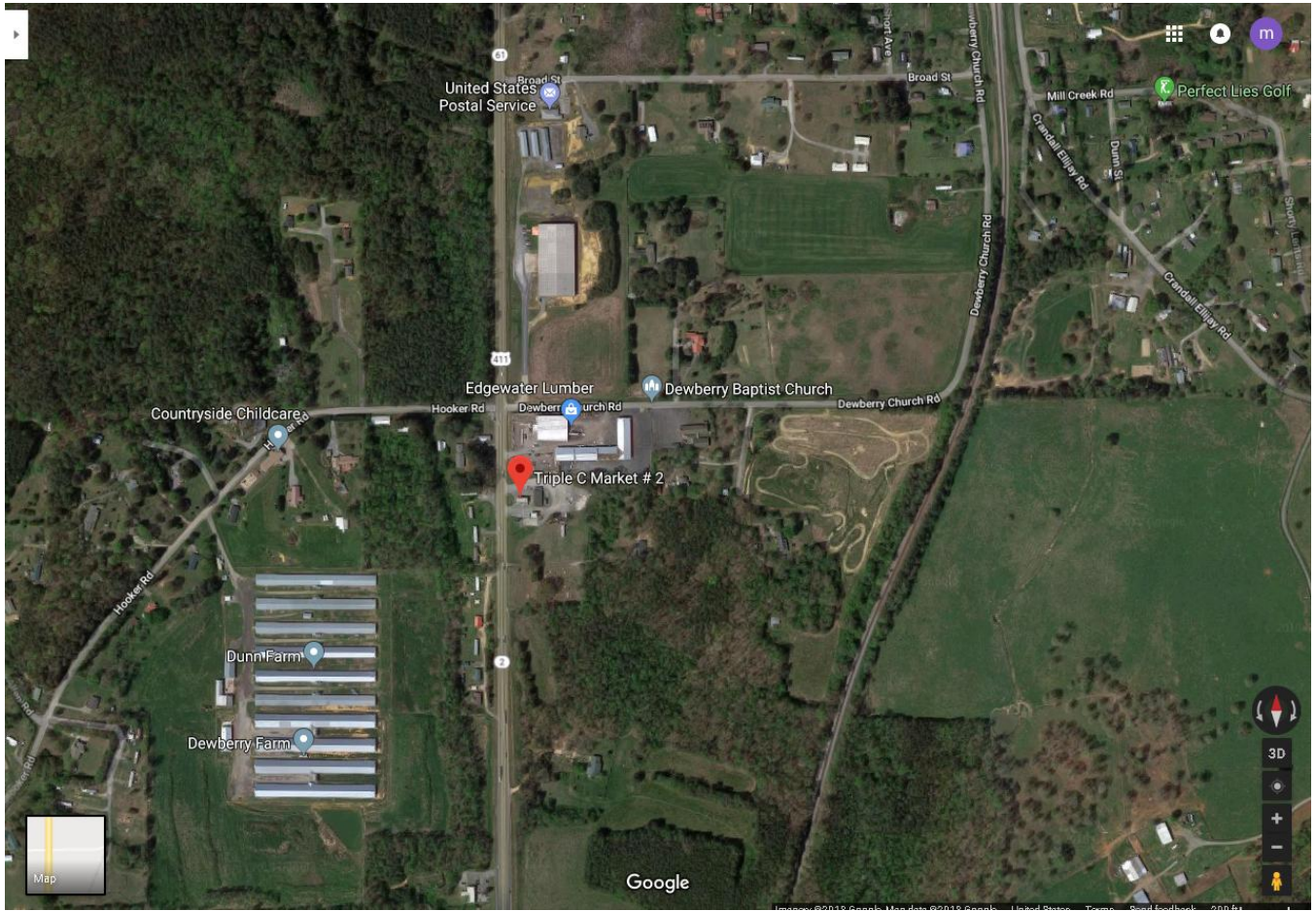


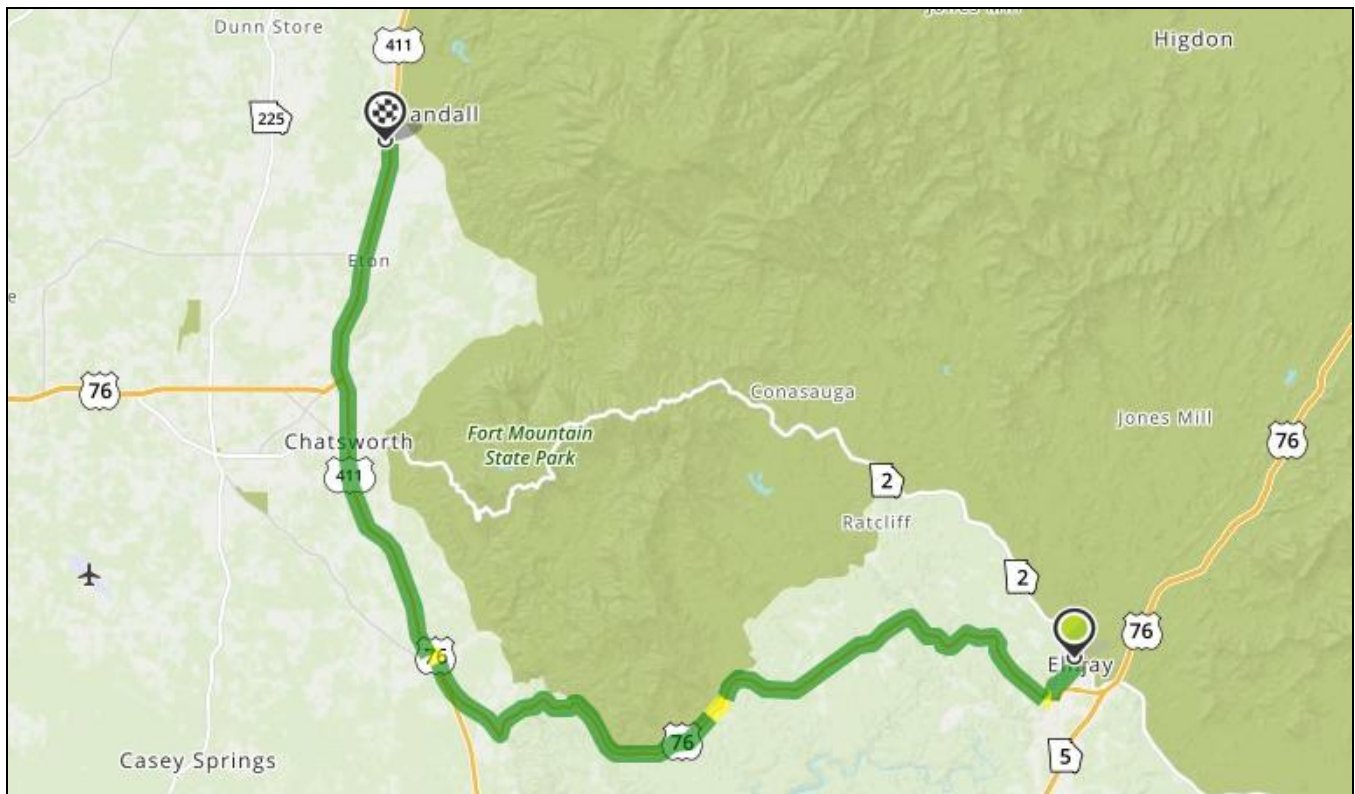
<https://goo.gl/maps/a4d4bHMCyzzg>

Note that to reach the Triple C Market #2 on Hwy 411, you'll travel north from Chatsworth through the little town of Eton and then to the little town of Crandall. After you pass Red Cut Rd. / Loughridge Rd. going north, the Triple C will be on your right. If you get to Hooker Rd. / Dewberry Church Rd., you've gone a tiny bit too far.



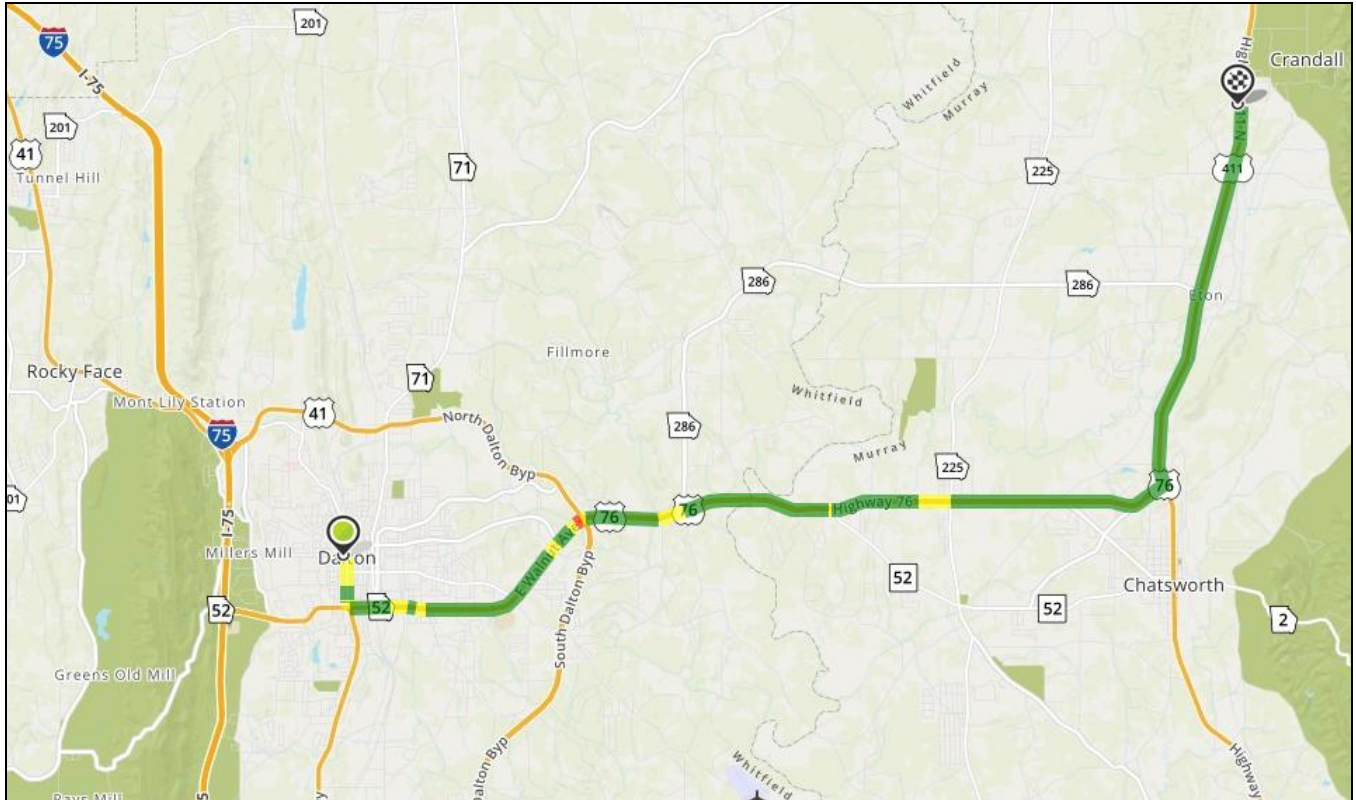


Driving Directions from Ellijay -- 40min 31.8mi



1. Start out going **southwest** on River St/GA-52/GA-2 toward Dalton St. Then 0.06 miles
2. Turn **right** onto N Main St. Then 1.05 miles
3. Turn **right** onto Tails Creek Rd/US-76 W/GA-282. Continue to follow US-76 W/GA-282. Then 16.06 miles
4. Turn **right** onto Old Highway 411/US-76 W/GA-282. Then 2.38 miles
5. Turn **left** onto Smyrna Ramhurst Rd/US-76 W/GA-282. Then 0.15 miles
6. Take the 1st **right** onto Highway 411/US-76 W/US-411 N/GA-61. Continue to follow US-411 N/GA-61. Then 12.07 miles
7. Sunoco, 6110 HIGHWAY 411 N is on the **right**.

Driving Directions from Dalton -- 28min 18.2mi



1. Start out going **south** on S Thornton Ave toward W Cuyler St. Then 0.70 miles
2. Turn **left** onto W Walnut Ave/GA-52. Continue to follow GA-52. Then 12.10 miles
3. Turn **left** onto N 3rd Ave/US-41 N/GA-2/GA-61. Continue to follow US-41 N/GA-2/GA-61. Then 5.40 miles
4. Sunoco, 6110 HIGHWAY 411 N is on the **right**.