

Hemlock Treatment at Smithgall Woods Project Details

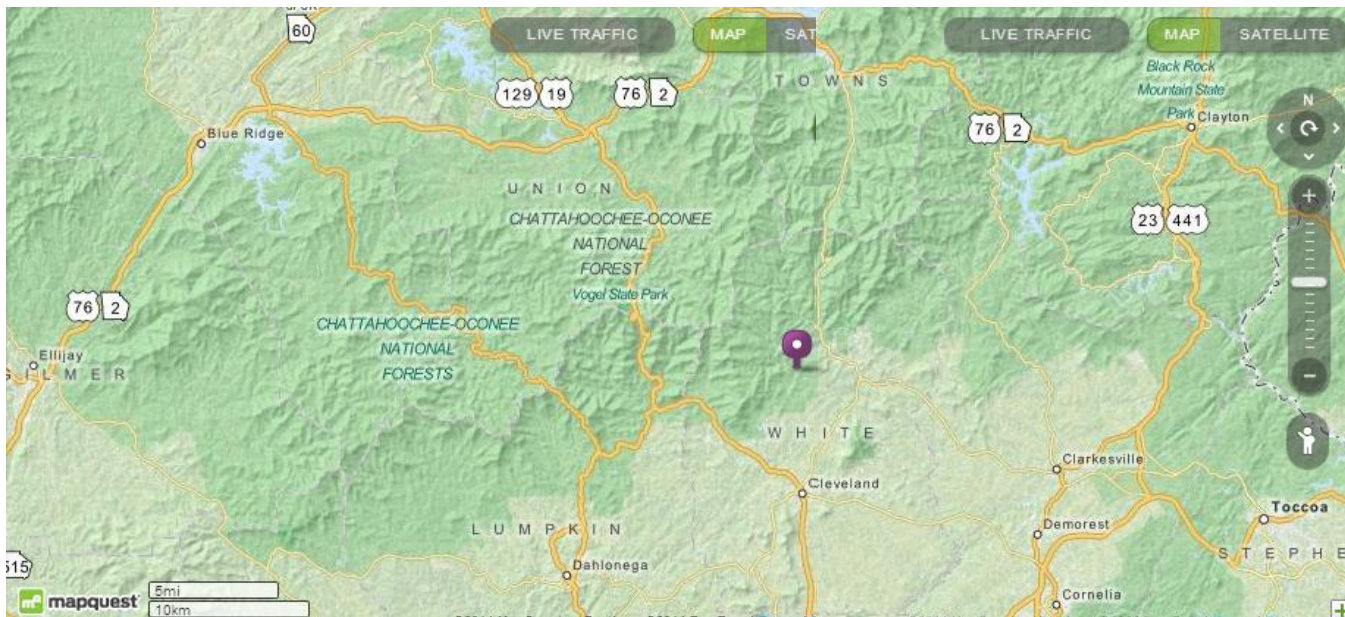


Date:	Saturday, March 27, 2021
Event:	Volunteer hemlock treatment project at Smithgall Woods, Helen, GA in White County. The project involves applying chemical treatment to 300-350 hemlocks using soil injectors.
Where to Meet:	We'll gather at the Smithgall Woods Visitors Center, 61 Tslaki Trail, Helen. See map on next page.
Notice:	As SGH is committed to protecting the health and safety of our volunteers at all events, we will be following CDC guidelines regarding the coronavirus pandemic. >If you have, or recently have had, a fever or any other symptoms of COVID-19, please do not sign-up and do seek appropriate medical help. >All volunteers are required to wear face coverings. >We will maintain a 6-foot social distancing except for family units. >Group size will be limited to 6 volunteers plus the project leader so please sign up early.
Schedule:	9:00 a.m. – Volunteers from SGH and Friends of the Park report. First, you'll receive a briefing on the condition of the hemlocks, treatment process to be used, and safety reminders. Then you'll be organized into small teams, receive your equipment and supplies, hike to the treatment site, and begin treating trees Mid-day – We'll stop work, clean the equipment, and have a picnic lunch. Afternoon – After lunch, we'll refill the injectors and resume work. We plan to stop by 3:00 p.m. (or sooner if finished), clean the equipment, and head for home.
Access:	The road to the meeting site is paved. Four-wheel drive is not necessary. You can park in the Visitors Center parking lot, and the entrance fee will be waived if you identify yourself as a volunteer for the day.
Terrain:	The terrain at the work sites is moderately rolling. We'll walk down a foot trail to reach the site. We'll make sure everyone is assigned to a work site where they can be safe and comfortable.
What to Wear:	Dress for the weather and the activity, including long pants and long sleeves, sturdy footwear with socks, gloves, and rain gear in case of light rain. Nitrile gloves will be provided for those who will be handling chemicals.
What to Bring:	Pack a sack lunch and personal water bottle, and a camera if you like. Your favorite hiking stick and a small day pack to carry things in may come in handy. We'll provide some snacks and extra bottled water. If you have any serious allergies (like bee stings), bring whatever you need to
Don't Bring:	This is an environmentally-friendly, pack-it-in pack-it-out event, so please don't bring any glass or styrofoam items. Also, as much as we love dogs, please don't bring them this time
Registration:	Participants must sign up in advance by contacting Donna by phone at 706-429-8010 or by e-mail at donna@savegeorgiashemlocks.org . If you have questions, please call or email before you get to the area as communications service may be sketchy there.

Smithgall Woods Visitor Center, 61 Tsalaki Trail, Helen, GA 30545.

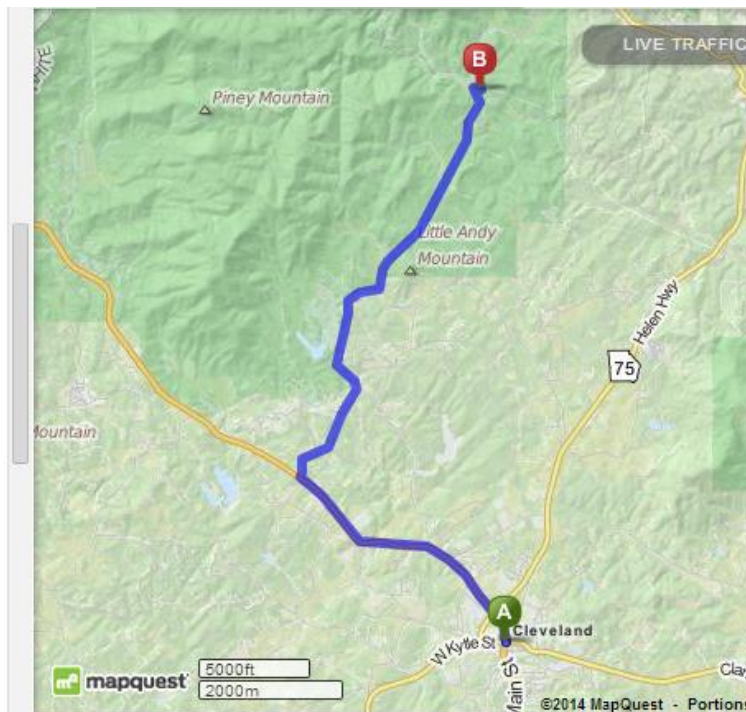
Phone 706-878-4736

Parking fee \$5 per car, free for volunteers.

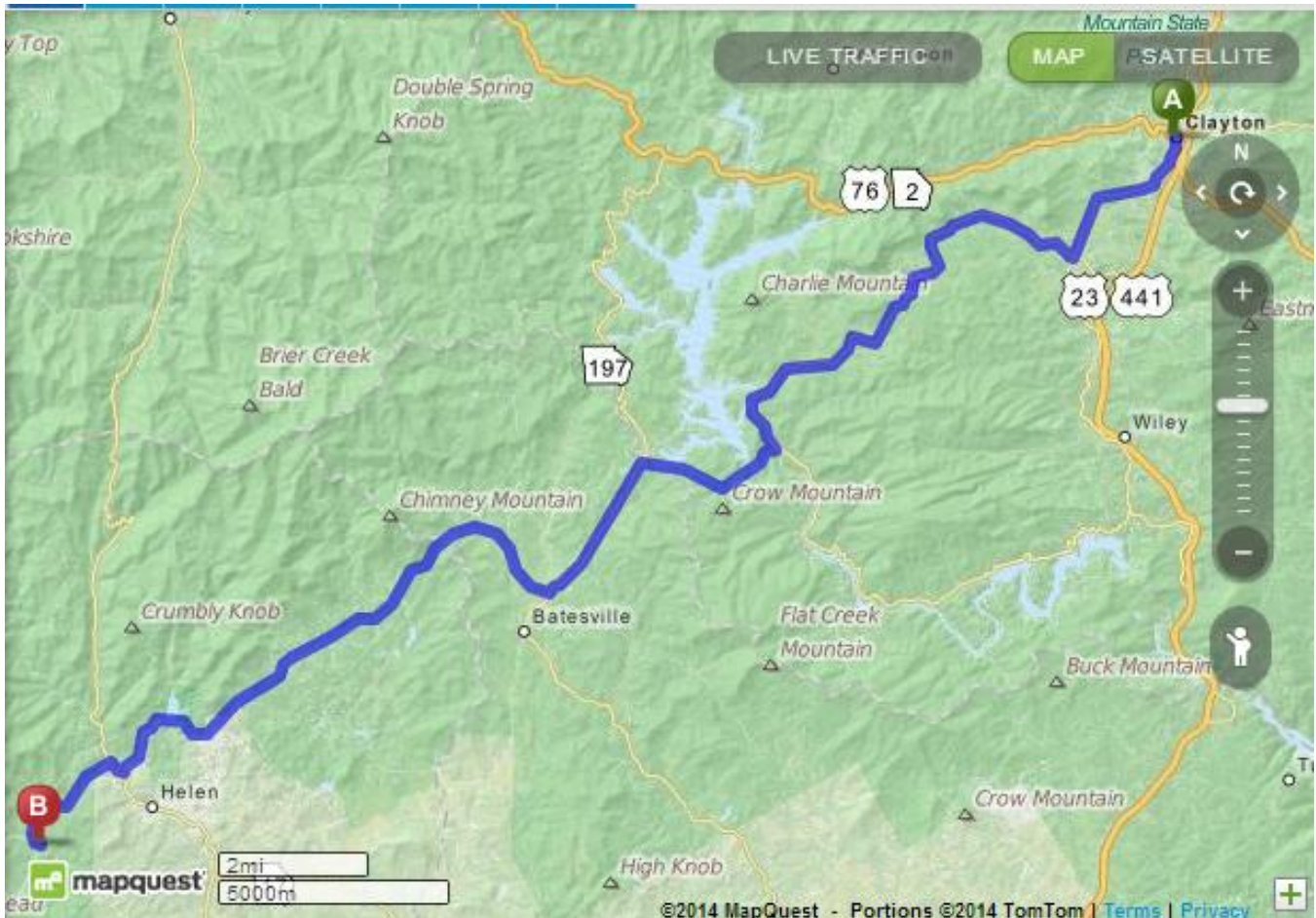


Directions From Cleveland:

1. Start out going west on E Kytle St/GA-115. 0.01 mi
2. Take the 1st right onto N Main St/US-129 N/GA-11. Continue to follow US-129 N/GA-11. 3.4 mi
*Allstate Insurance is on the corner
If you are on W Kytle St and reach Courthouse Sq
you've gone a little too far*
3. Turn right onto GA-75 Alt/Highway 75 5.7 mi
Alternate.
*GA-75 Alt is just past Twin Lakes Rd
If you reach Tesnatee Gap Valley Rd you've gone
about 0.4 miles too far*
4. Turn right onto Tsalaki Trl. 0.1 mi
*Tsalaki Trl is 0.5 miles past McConnell Dr
If you reach GA-348 you've gone about 0.1 miles
too far*
5. 61 Tsalaki Trl is on the left. 0.2 miles too far
*If you reach Harvest Hill Dr you've gone about 0.2
miles too far*

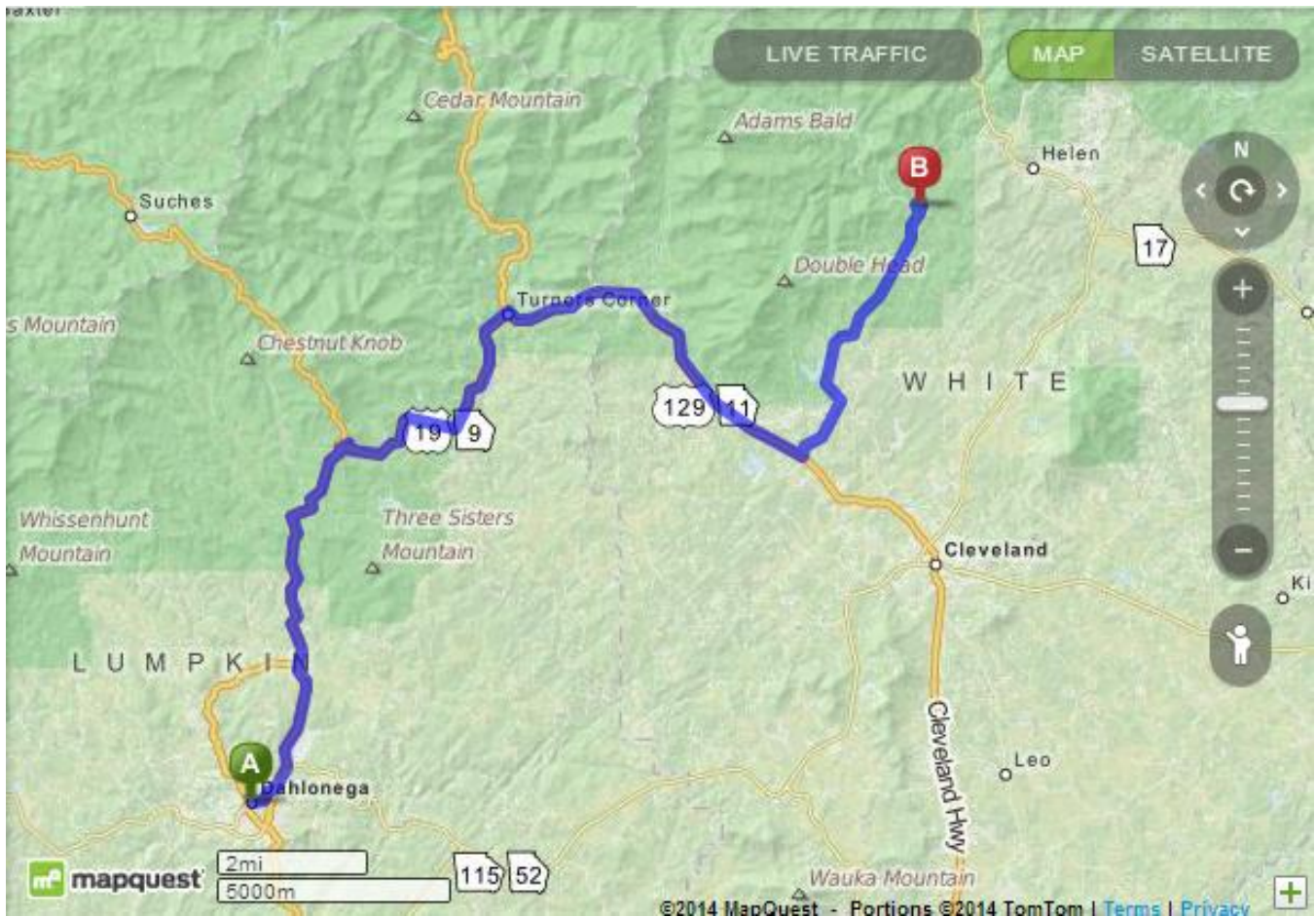


Directions From Clayton:



- | | |
|---|--|
| <ul style="list-style-type: none"> 1. Start out going south on S Main St toward Roane Aly. 0.9 mi <hr/> 2. Turn slight left onto Old 441 S. 2.4 mi <hr/> 3. Turn right onto Bridge Creek Rd. 9.7 mi
<i>Bridge Creek Rd is just past Thomas St
United States Postal Service is on the corner
If you are on Blair St and reach Taylor St you've gone a little too far</i> <hr/> 4. Turn right onto Burton Dam Rd. 2.9 mi <hr/> 197 5. Turn left onto Highway 197 N/GA-197. 3.1 mi <hr/> 356 6. Turn right onto Highway 356/GA-356. 10.8 mi
<i>Highway 356 is 0.1 miles past Goshen Creek Rd
If you reach Meadowview Rdg you've gone about 0.1 miles too far</i> | <ul style="list-style-type: none"> 7. Turn right onto Highway 75 N/GA-17/GA-75. 0.3 mi
<i>Shooters On The River is on the corner</i> <hr/> 8. Take the 1st left onto Highway 75 Alternate/GA-75 Alt. 2.4 mi
<i>Highway 75 Alternate is 0.1 miles past Elrod Rd
If you reach Clayton Rd you've gone about 0.2 miles too far</i> <hr/> 9. Turn left onto Tsalaki Trl. 0.1 mi
<i>Tsalaki Trl is 0.1 miles past GA-348
If you reach McConnell Dr you've gone about 0.5 miles too far</i> <hr/> 10. 61 TSALAKI TRL is on the left. 0.2 mi
<i>If you reach Harvest Hill Dr you've gone about 0.2 miles too far</i> |
|---|--|

Directions From Dahlonega: 25.38 miles, 35 minutes



1. Start out going east on E Main St/GA-52 Bus 0.5 mi toward Boyd Cir.

2. Turn left onto Morrison Moore Pkwy E/US-19 N/GA-60/GA-52/GA-9. Continue to follow US-19 N/GA-60/GA-9. 4.0 mi
 US-19 N is 0.1 miles past Turner Rd
 JERRYS SUPERETTE is on the corner
 If you are on Walmart Way and reach Consolidated Gold Mine Rd you've gone a little too far

3. Turn slight right onto Highway 19 N/US-19 N/GA-60/GA-9. Continue to follow Highway 19 N/US-19 N/GA-9. 8.5 mi
 Highway 19 N is 0.1 miles past Wards Creek Dr
 If you reach the end of Regent Dr you've gone about 0.2 miles too far

4. Turn right onto Turners Corner Rd/US-129 S/GA-11. Continue to follow US-129 S/GA-11. 7.0 mi

5. Turn left onto GA-75 Alt/Highway 75 Alternate. 5.7 mi
 GA-75 Alt is 0.4 miles past Tesnatee Gap Valley Rd
 If you reach Twin Lakes Rd you've gone a little too far

6. Turn right onto Tsalaki Trl. 0.1 mi
 Tsalaki Trl is 0.5 miles past McConnell Dr
 If you reach GA-348 you've gone about 0.1 miles too far

7. 61 TSALAKI TRL is on the left. 0.2 mi
 If you reach Harvest Hill Dr you've gone about 0.2 miles too far